

NOTES:

1- See irrigation legend for mainline and lateral line pipe size and type

2- Direct burial control wires shall be installed in Sch. 40 PVC electrical conduit if required.

2- Direct burial control wires shall be installed in Sch. 40 PVC electrical conduit if required. Pressurized line (mainline).

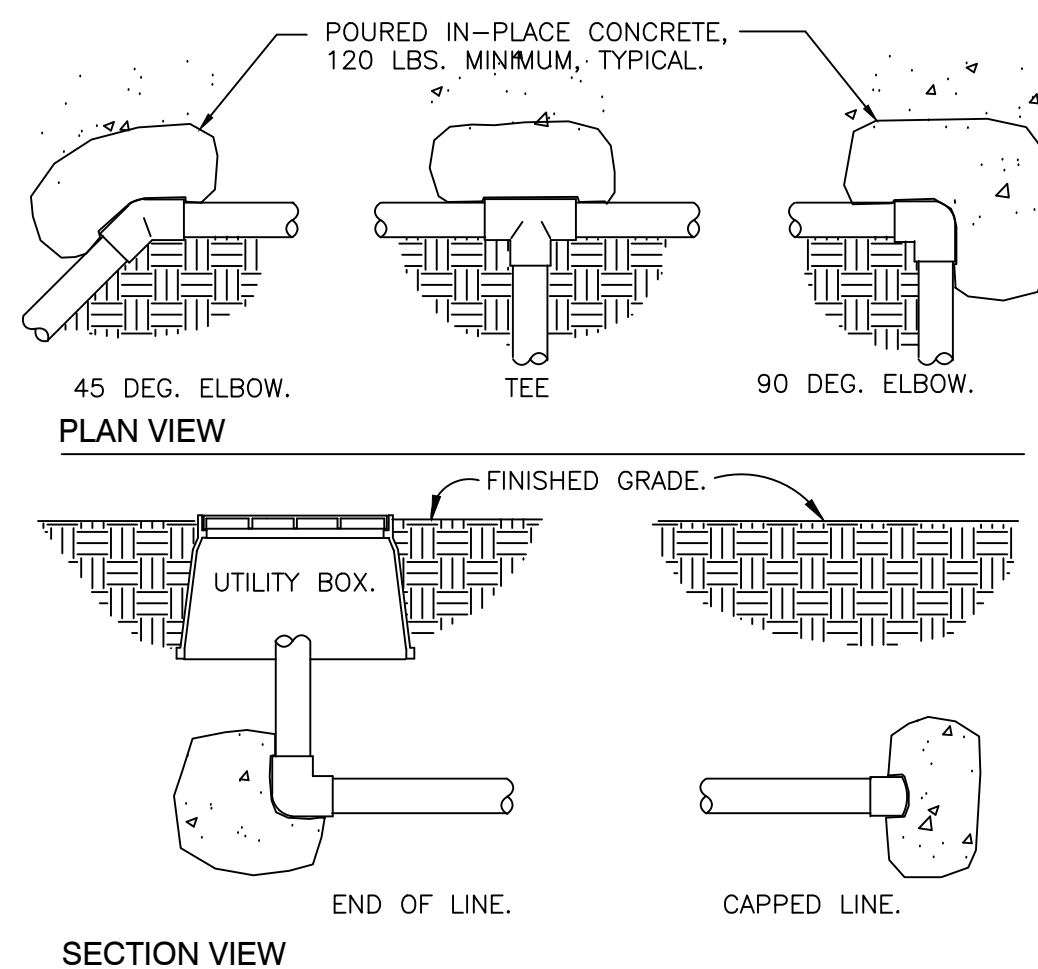
3- 2-wire irrigation wire shall be installed in Sch. 40 PVC electrical conduit.

4- Detectable locator tape shall be located six inches (6") above the entire mainline run

IRRIGATION TRENCHING

$$1\ 1/2'' = 1'-0''$$

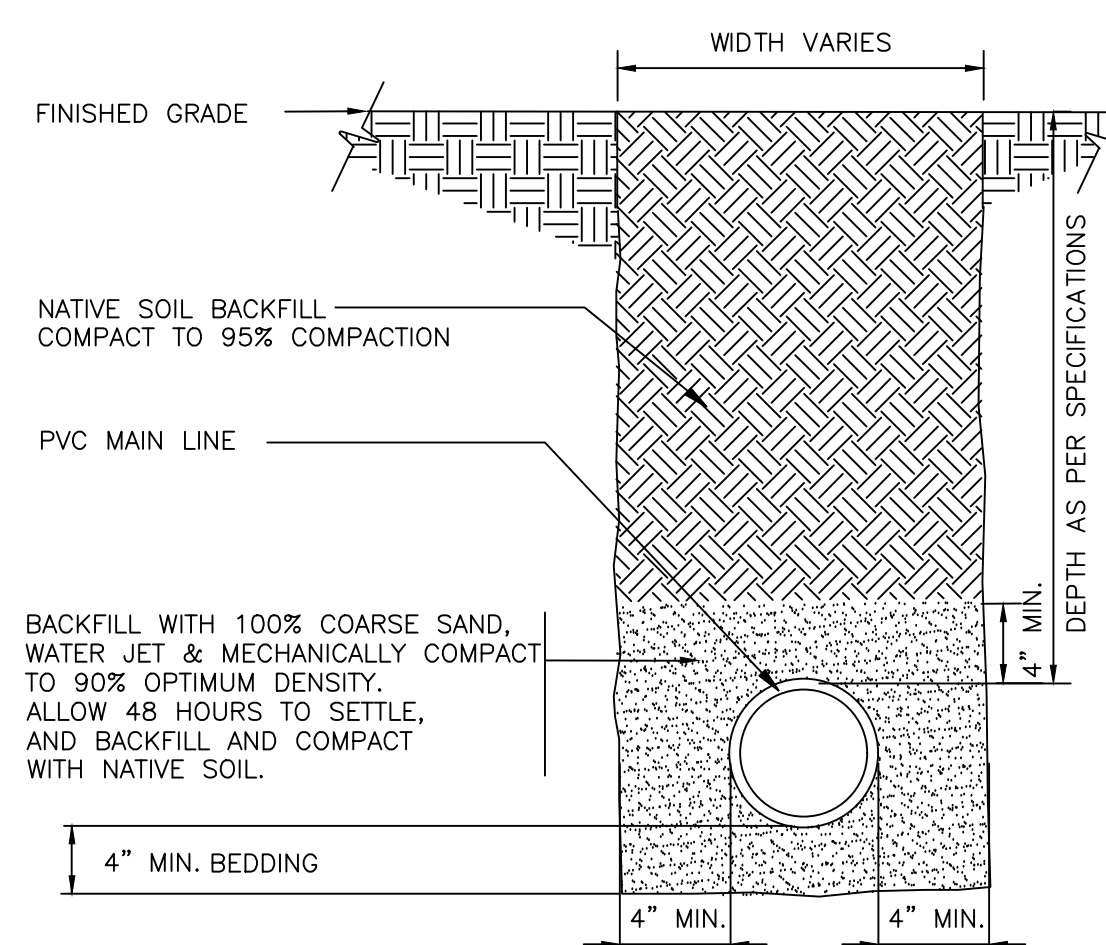
P-ST-08



2 THRUST BLOCKING

$$3/4'' = 1'-0'$$

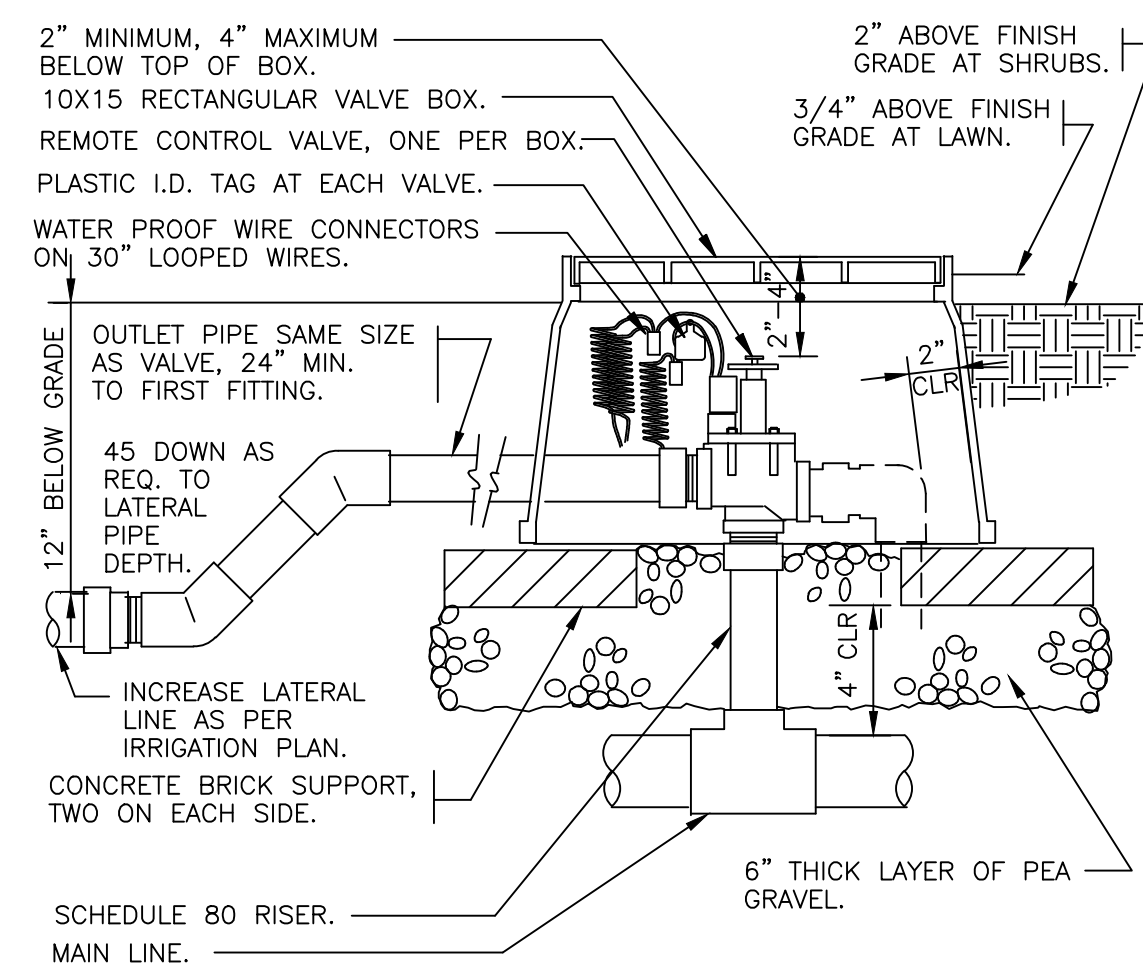
328409.76-01



 SLEEVE AT ROAD

$$1\ 1/2'' = 1'-0''$$

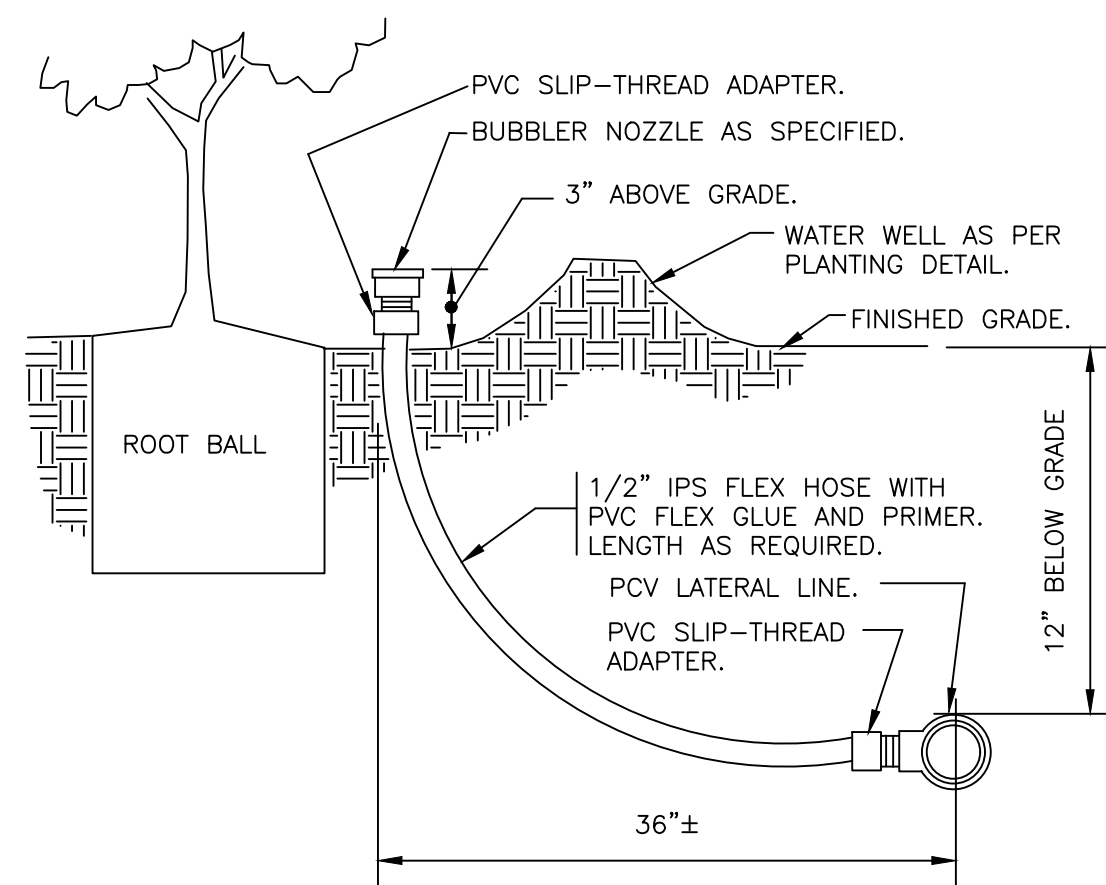
P-ST-20



1 ELECTRIC REMOTE CONTROL VALVE

$$1\ 1/2'' = 1'-0''$$

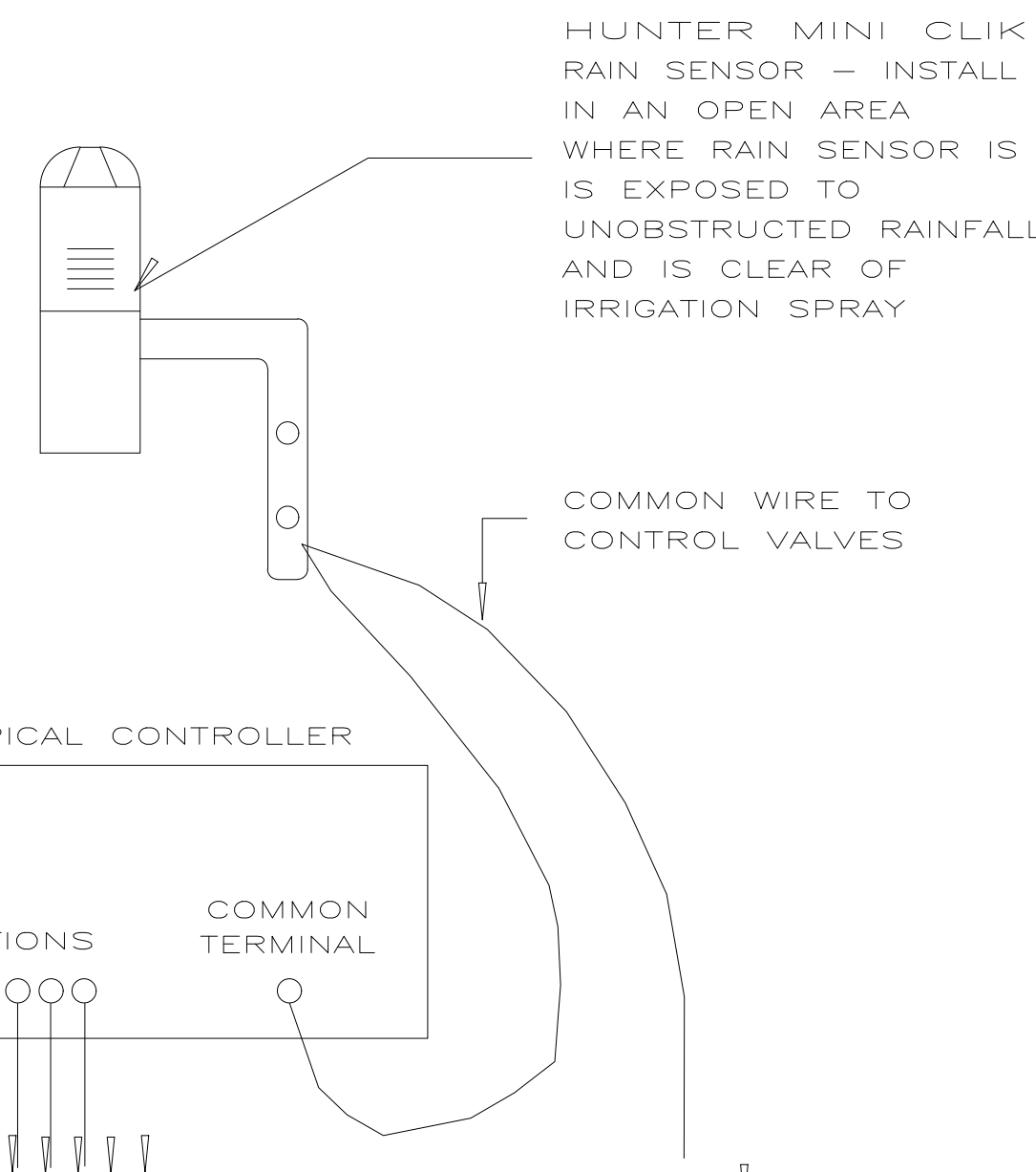
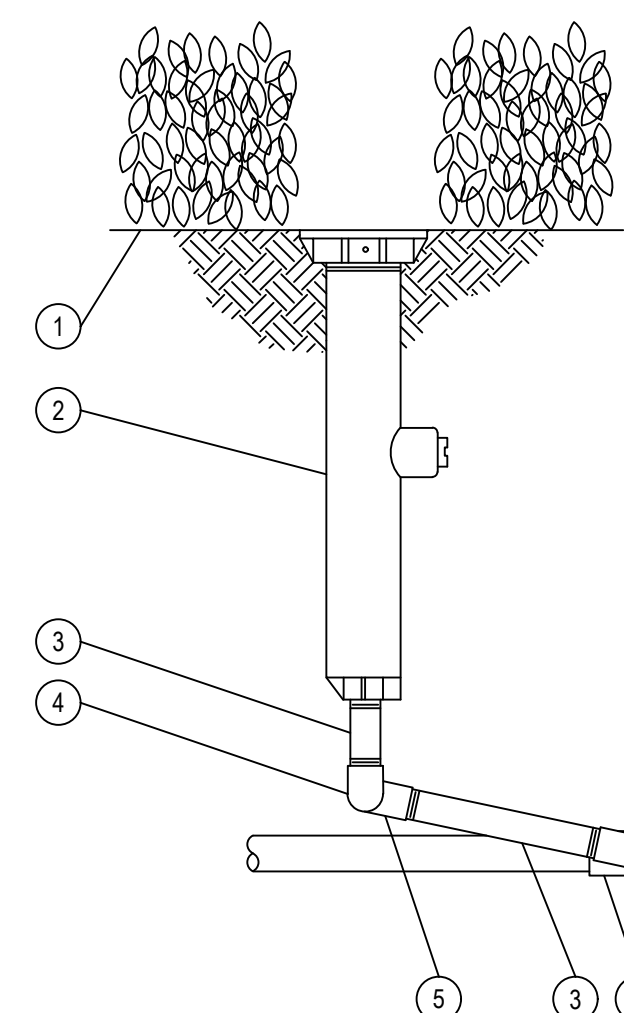
328406.13-01



BUBBLER ON FLEX HOSE RISER

$$3'' = 1'-0''$$

328403.53-01

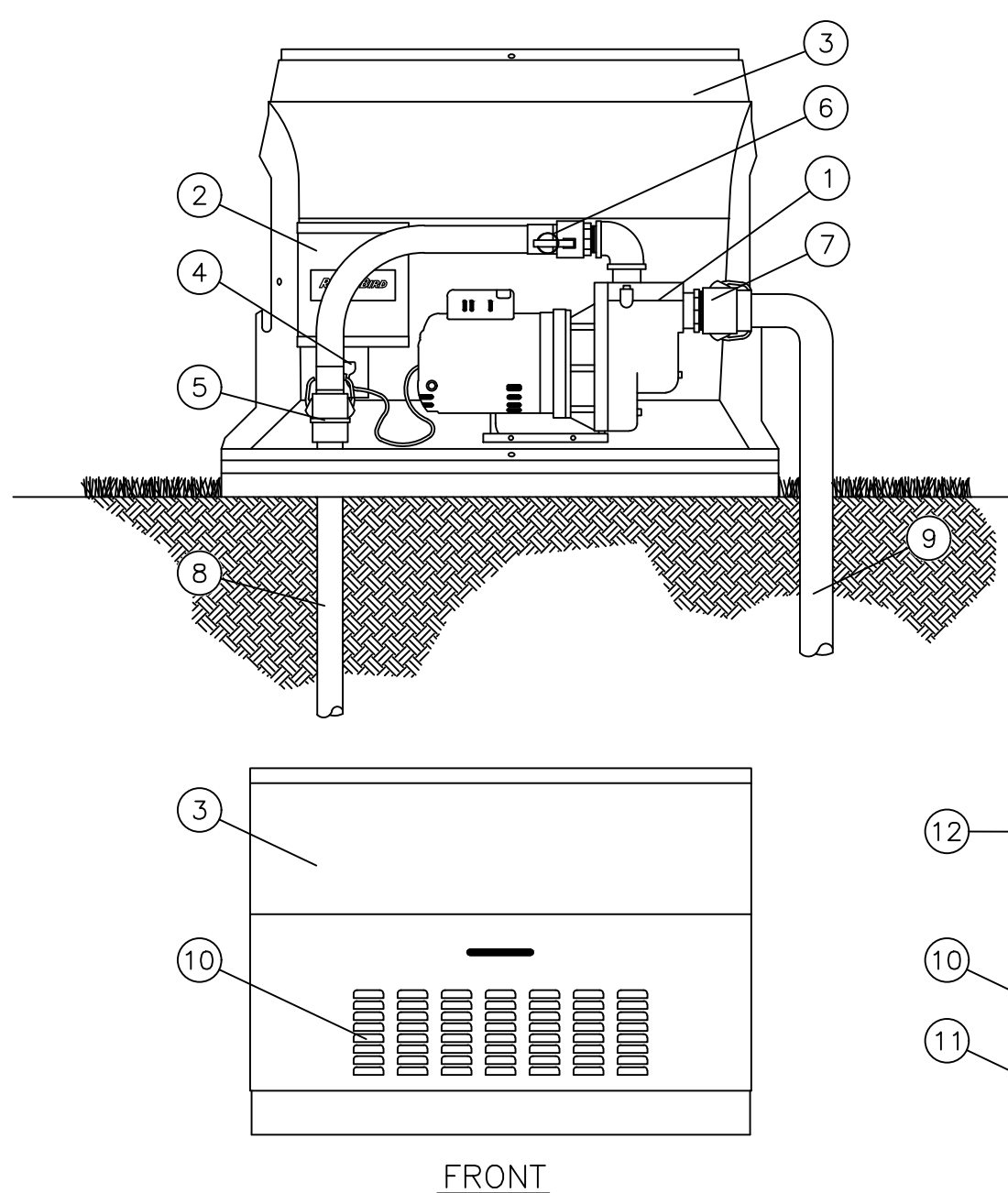
 RAIN SENSOR

- 1 FINISH GRADE/TOP OF MULCH
- 2 POP-UP SPRAY SPRINKLER:
RAIN BIRD 1806 -SAM-PRS WITH 1800 VPC
WITH RAIN BIRD ROTARY NOZZLE
- 3 PVC SCH 80 NIPPLE
(LENGTH AS REQUIRED)
- 4 PVC SCH 40 ELL
- 5 PVC SCH 40 STREET ELL
- 6 PVC SCH 40 TEE OR ELL
- 7 PVC LATERAL PIPE

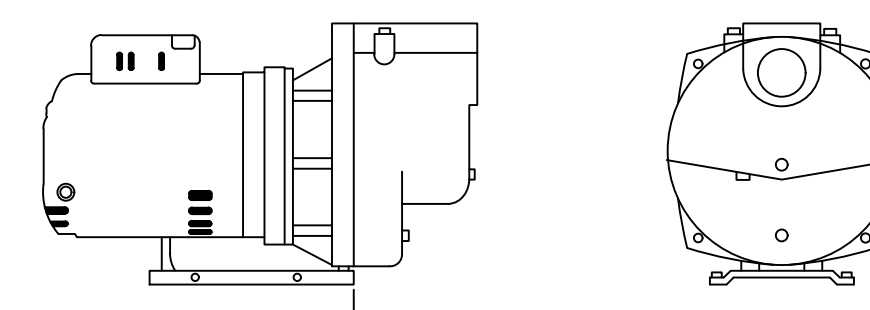
7 1800 SPRAY BODY

NOTES:

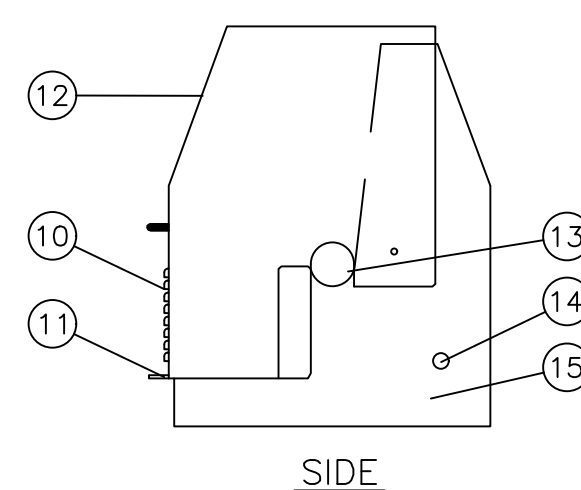
1. INSTALLATION TO BE COMPLETED IN ACCORDANCE WITH MANUFACTURER'S SPECIFICATIONS



IRRIGATION PUMP



5 HP IRRIGATION PUMP



- (1) 5-HP IRRIGATION PUMP
- (2) PUMP STATION RELAY
- (3) ENCLOSURE
- (4) 230 VOLT MAIN POWER PLUG WITH QUICK DISCONNECTING PIGGY-TAIL CORD
- (5) 1-1/2" PVC ADAPTER
- (6) QUICK DISCONNECTING COUPLING
- (7) QUICK DISCONNECTING COUPLING
- (8) 1-1/2" DISCHARGE LINE
- (9) 2" SUCTION LINE FROM WELL
- (10) COOLING LOUVRES
- (11) PADLOCK HASP
- (12) ENCLOSURE TOP COVER
- (13) INTAKE/DISCHARGE HOLE (BOTH SIDES)
- (14) #1" KNOCK OUT FOR 3/4" CONDUITS (BOTH SIDES)
- (15) ENCLOSURE BASE



Know what's **below**.
Call before you dig